

Monodrone 1800

Unmanned Surface Vehicle



Monodrone 1800

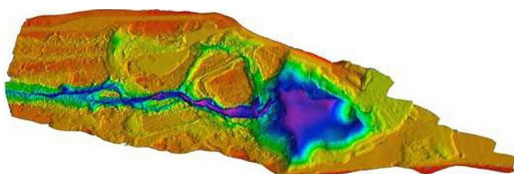
MONODRONE 1800 is a multi-mission, flexible shallow water Unmanned Surface Vehicle and is easy to transport and deploy.

It is a multi-sensor platform which includes a single or multibeam echosounder, a winch to collect data into the water column until 30 meters and video links with deep learning capabilities.

The MONODRONE 1800 endurance is more than 8 hours @1.2ms depending on the weather and sea conditions.

An hydrodynamic shape the MONODRONE 1800 design induce a stable platform for the survey and thereby delivers high-quality data.

An autonomous boat that can sail precisely in accordance with mission planning. A cutting edge technology which make the survey safe and affordable with a diversity of applications, all the while maintaining the highest standards of data quality.



TECHNICAL SPECIFICATIONS

Dimensions

Length, width, air draft, draught :	1.80m, 0.66m, 0.80m, 0.15m
Weight :	31kg
Payload :	28kg
Moopool :	250*220mm

Performance

Speed (max) :	4.2 m.s
Speed (survey) :	1.3 m.s
Propulsion :	2 motors

Power system

Battery :	Lith-Ion 2,5 kWh
Endurance :	6h @ 1.2 ms
Charging time :	3h
Extra power :	Up to 5 kWh
Survey power :	1 kWh

Communications

Radio RC :	5GHz Base station
Autopilot :	Mission planning, automatic waypoint navigation, real-time feedback
Telemetry options :	Modem Radio LTE

IT Options

Survey computer :	Rugged
Windows Immersive :	Live remote control
Navigation software :	Mission planning compliant with all hydrographic solutions

Supervision options

HD Cameras :	Forward and backward looking cameras
Video target detection :	Option Targetdetection
Lidar :	scanning (100m)
AIS	Option AIS Transponder

Storage and transport options

Launch and recovery system :	Cage or trailer in option
------------------------------	---------------------------

Navigation Equipment

GNSS receiver and compass :	L1/L2 frequency, multi-constellation, True heading0.2°
NTRIP Modem in option	
IMU motion sensor in option	

Extra payload (can be installed on demand)

Winch system :	30m depth in the water column – option 100m
Singlebeam :	EA40®, PA500®, ...
Multibeam :	Norbit®, Konsberg®, R2 Sonic®, Teledyne®,
ADCP :	Teledyne ®, ...